

THE DOCUMENT COMPANY
FUJI XEROX

DocuCentre-II

3005/2055/2005

Digital Multifunction Device

Your intelligent
Business Partner



DocuCentre-II 3005/2055/2005

Your Intelligent Business Partner

Efficiency, Speed and Precision... deciding factors in business competition.

No matter what are your needs, the DocuCentre-II 3005/2055/2005 is your intelligent partner that will provide you with the efficiency, speed and precision for your business.

Based on the 33ppm/28ppm/23ppm engine speeds popular in most offices, it features a highly reliable copy function, print features that support sophisticated network environments, the richest fax functions available and a scan function for easy digitization of your documents. With these features, the DocuCentre-II 3005/2055/2005 will prove to be real value for your business now and into the future.

Print

The DocuCentre-II 3005/2055/2005 makes it easy to print your documents securely with various multi-layered authentication features, it ensures ease of mind if you have print jobs containing confidential information.

Fax

Send and receive faxes straight from your PCs. With DocuCentre-II 3005/2055/2005 users can fax directly from their PCs or have incoming faxes routed back to them through various ways.

Scan

Scan your documents safely and securely with advanced scanning features that allow you to send scans to various destinations.

Copy

Quick startup time with warm-up time of 15 seconds or less and job building features that make it easy to create batch jobs.

Document Flow Services

- Enhanced Scan to E-mail (sender's address from LDAP & Locked)
- Enhanced Job Flow Service

Management Services

- External Authentication
- Kerberos Authentication
- LDAP / SMB Authentication, LDAP with SSL

Security Services

- Secure Print / Private Print
- DW/PDF document – Password Encryption

Enhanced Basic Features

- DADF paper capacity: 75 sheets, 50 DPM
- FCOT: 4.3 Sec
- USB 2.0, IEEE1284, 10Base-T/100Base-TX/ Wireless Printing 802.11b

High Quality

- Real 1,200 x 1,200 dpi Print Resolution
- EA Toner

Versatile Network Scanning

- Scan to Mail Box
- Scan to SMB/FTP
- Scan to E-mail
- Box Job Flow
- Job Flow Service



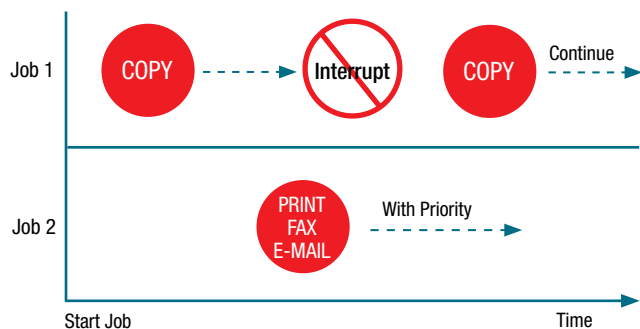


PRINT

With support for sophisticated network environments like Citrix MetaFrame and SAP R/3 and advanced security features, your printing is now easier and more secure.

Priority interruption for urgent print jobs

Enhance your workflow and efficiency. With this handy feature, you can now momentarily interrupt continuous copy jobs to process your priority print wait jobs*.



*The print wait jobs refer to print jobs, fax stored jobs and e-mail jobs.

Print Security

Secure Print

This prevents direct output of the print jobs sent to DocuCentre-II 3005 / 2055 / 2005. After sending a print job, users must enter a password at the control panel in order for the documents to be printed. Any print jobs stored on the DocuCentre-II 3005 / 2055 / 2005 are printed when the passwords is input.



Private Charge Print

This allows administrators to force users to store print in private password protected directories. When output is desired, the user must authenticate at the control panel, then select the documents to be printed.

Secure IPP

SSL encryption assures the confidentiality of data in document printed via IPP. Should a print job be intercepted while in transit, SSL encryption assures that the document data remains secure.

Data Overwrite*

As an added security measure DocuCentre-II 3005 / 2055 / 2005 devices can be configured to automatically delete and overwrite print jobs output.

*Requires the optional HDD, Data Security Kit

Citrix® MetaFrame® compatibility

Fuji Xerox DocuCentre-II 3005 / 2055 / 2005 printers integrate seamlessly into both Citrix MetaFrame and SAP R/3 network environments allows for easy rollout and administration of network printers in addition to expanded printer functionality.



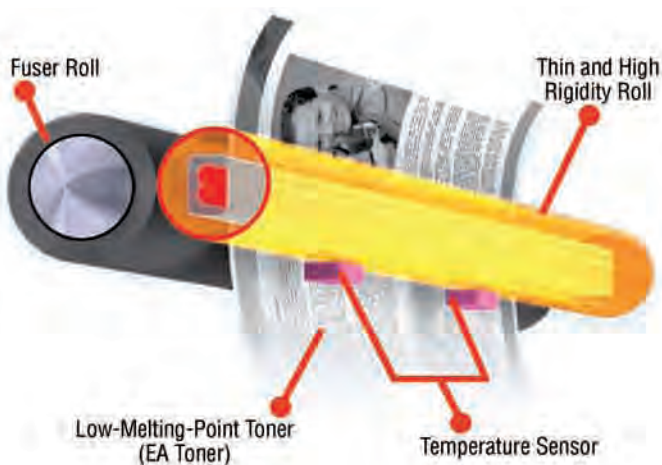


COPY

The technology behind our copier functions ensures high reliability. You can now get your copies created easily and quickly.

Enables Swift Start of Work with a Warm up Time of 15 Seconds or Less

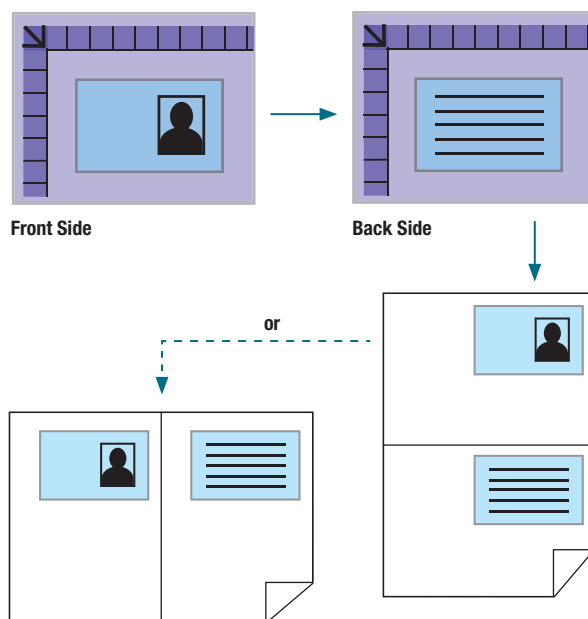
The amount of heat which is necessary for toner fusing is reduced by the adoption of the "EA Toner". The fuser unit employs a thin and high-rigidity heat roll, contributing to speedy warm up.



Easy ID Card Copying

ID Card Copying allows you to copy both the front and the back of your ID card onto the same side of the paper without re-loading the same piece of paper into the tray.

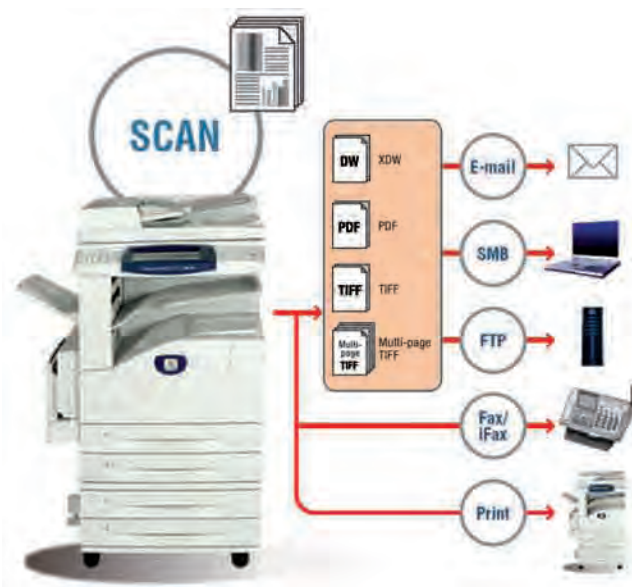
With this feature, you no longer have to spend time figuring out how to best place your ID card when making copies. Reduce paper wastage and save time with this handy feature. Select between two output layouts: portrait or landscape.





Advanced Scanning Features

A one-stop scan to various destinations is available with our multiple destination scanning feature. You can scan your documents securely too.



Scan to File

Scanned documents can be saved in TIFF, PDF, XDW (DocuWorks) file formats.

Scan to Emails

Documents can be sent to multiple e-mail addresses immediately after scanning.

Scan to Network Clients

Hierarchical display of the entire SMB network makes it easy to choose storage destinations for scanned documents.

Distribute to Multiple Destinations

Distribute a scanned documents to different recipients simultaneously via printouts, e-mail, FTP, SMB, fax and iFax.

Custom Job Flows

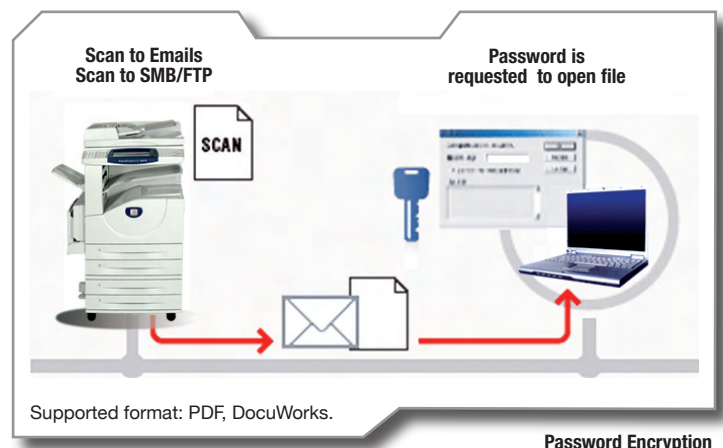
Easily incorporate scanning features into a "Job Flow" to simplify complex scanning, saving, and distribution operations.

Safe and Secure Scanning

DocuCentre-II 3005 / 2055 / 2005 provide a high-level of security for operations. Scanned documents can be locked down and their distribution severely restricted via a host of features used singly or in tandem

Password Encryption

Protect documents distributed via e-mail, FTP, and SMB with password encryption. Encryption documents saved in PDF and XDW file format can be freely distributed but require a password to be opened. Restrictions can be set on editing, posting, and printing as well.





FAX

The DocuCentre-II 3005/2055/2005 has been designed for paperless fax sending and receiving, thus, eliminate paper wastage from junk faxes.

Paperless fax sending from client PCs

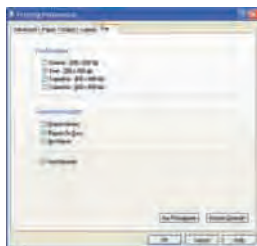


Users can fax directly from their PCs, eliminating the need to print and collate output before faxing. Fax from just about any application or 'build' a single fax composed of documents from different applications. This improves office efficiency by simplifying fax procedures and helps conserve consumables like paper and toner.

Now this function is available with PS driver



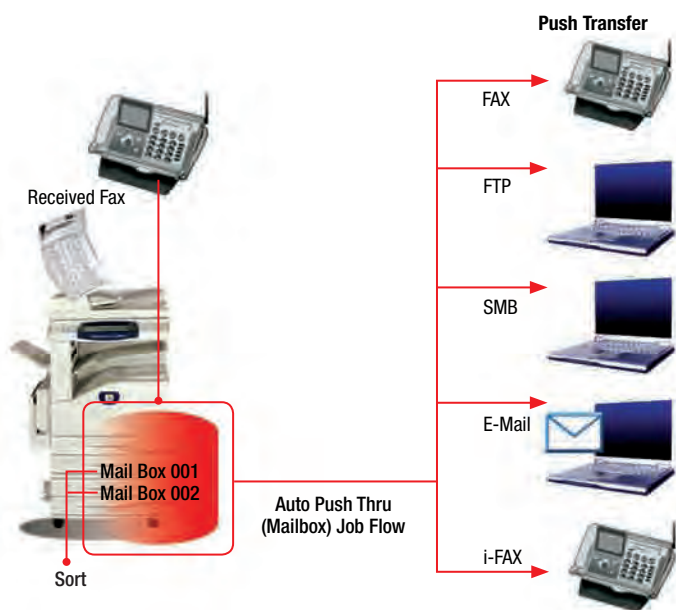
PCL Driver setting



PS Driver setting

Paperless Fax receiving in diverse destination

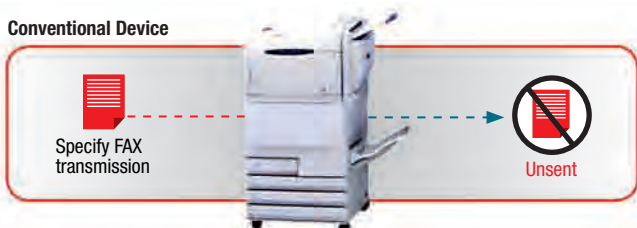
This feature digitizes, auto-transfers and saves fax-received documents.



Fax Re-Send

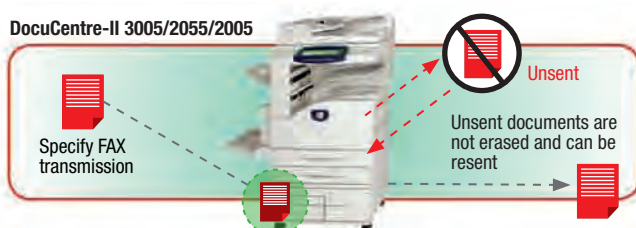
This handy feature allows you to save documents that did not go through when faxed, without deleting them. This way, you can resend them at your own convenience. (Excludes IFAX, immediate sending, Relay Broadcast by the relay station, PC Fax and Fax transmissions of Job Flows.)

Conventional Device



Unsent documents are deleted without being stored. To resend, one has to physically reset and send the document.

DocuCentre-II 3005/2055/2005



Unsent documents are saved in the device.



FAX

Specifies a Paper Tray in Printing Fax Reception

Paper trays for printing received faxes can be specified. This can be used when there is a need to specify paper size, paper quality etc. this is convenient when there is a need to use recycled paper only for fax receptions or for the use of coloured paper for fax receptions to distinguish faxes from other standard printouts.

Preventing Mis-transmission of FAX/iFAX

FAX/iFAX security features are in place to prevent mis-transmission of faxes caused by human errors or errors due to registered address book.

Destination Restriction - Restrict fax recipients

Limit distribution of faxes to entries found in the address book. This security feature makes it impossible to fax to destinations not already registered. Control panel functions for entering and adding fax destinations can be disabled.

Re-entry of FAX Destinations

Setting in the system administrator menu can enable the start of transmission by entering a FAX/iFAX destination twice.

Direct FAX forced prohibition

Mis-transmission of Direct FAX and information leaks can be prevented when the feature of "Direct FAX forced prohibition" is set to ON even after commanding Direct FAX. (System Administrator Mode)



Enables Linkage to 3rd Party Fax Server Application

DocuCentre-II 3005/2055/2005 series is equipped with a feature that links to 3rd-party Fax Server applications* and transfers fax transmission documents (image data) scanned by the device to the Fax Server through network. For receiving fax documents, the Fax Server will receive the document and store the data in the device as a print job. It can be discharged as paper documents by printing fax receptions.

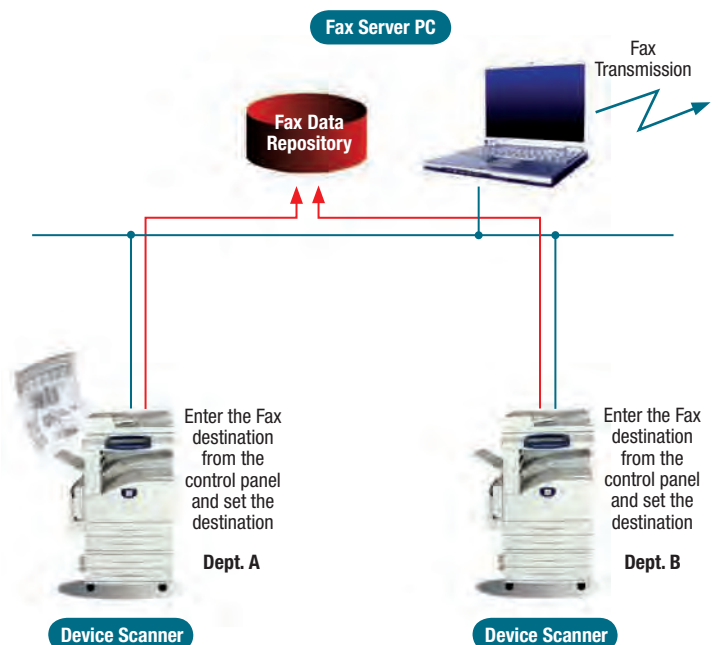
Major Benefits

By managing multiple devices with the Fax Server;

- There is no need to install fax options and telephone lines for each device.
- Your security needs are easily supported since all transmission records can be managed with the Fax Server.

Supported Fax Server Products are:

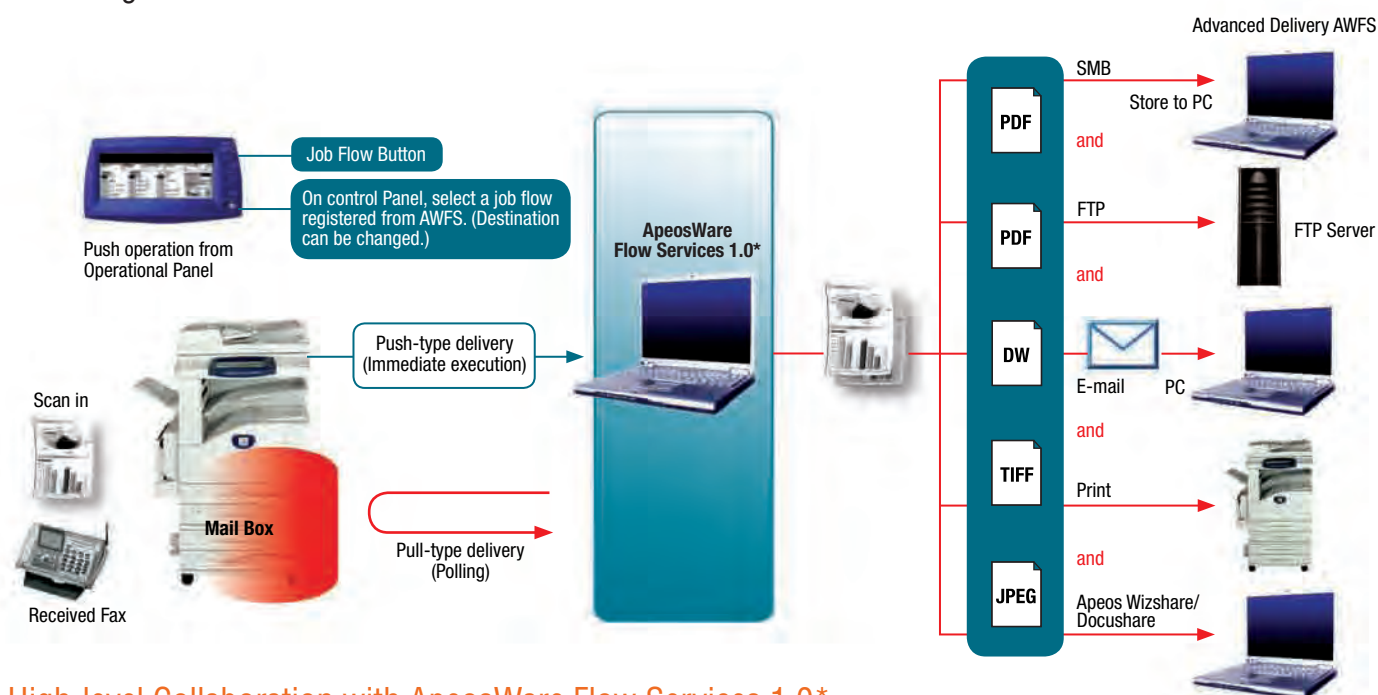
- Accurate Law Office (ARLO)
- Freeflow OfficeFaxPro certificate
- GeniFax Ver 3.3.1
- RightFax9.0 EDC Fax & Scan with Templates
- StreamCentre Version 6.35



DocuCentre-II
3005/2055/2005
will provide a helpful
document flow
operation in your
office.



With ApeosWare Flow Services 1.0*, you can now design document flows easily. Improve your ability to manage workflows.



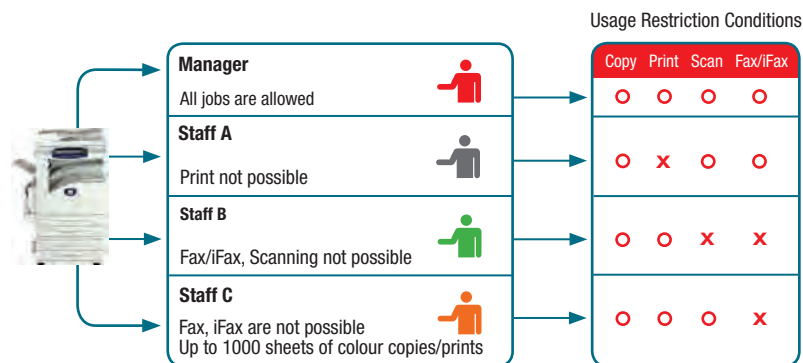
High-level Collaboration with ApeosWare Flow Services 1.0*
using Job Flow (Button)

*Optional FujiXerox Software

Advanced Features

Control. At your fingertips.

Control and manage device usage with internal Auditor or Xerox Standard Accounting (XSA). With Internal Auditor, you can give full access to print, copy, scan, and fax functions or restrict them to only certain functions. XSA provides you with usage date, as well as the capability to efficiently apply settings to other DocuCentre devices in the enterprise.



Internal Auditor

Restrict the usage for each user, be it copying, printing and scanning. In addition, you can even restrict access rights, enable or disable the use of Fax and iFax features for different users. Gain enhanced control by setting a limit to the number of copies, prints and scans. A simple Job Report, which lists the usage of each user gives better knowledge of costs and assist with stronger cost control.

Xerox Standard Accounting (XSA)

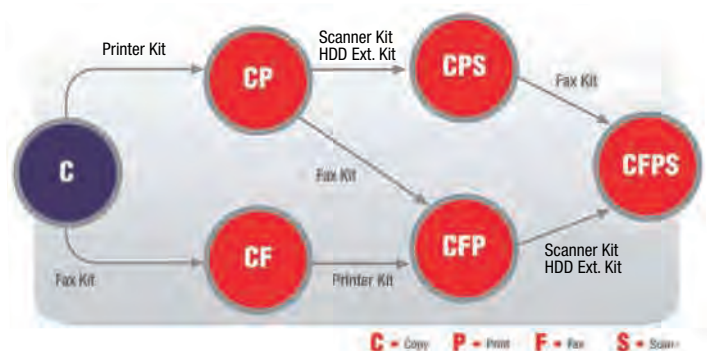
XSA allows setting of access rights and usage limit to copy, print, scan and fax by each user. For better control and management, you can also create groups and assign user account to different groups. The data can be output to CSV file then imported to an accounting or spreadsheet application. For easier device management, settings can be cloned and applied to other multifunction devices.

IC card access control



For added security, access to DocuCentre-II 3005 / 2055 / 2005 can be controlled through IC cards with the addition of an optional IC cards reader. DocuCentre-II 3005 / 2055 / 2005 are compatible with HID Prox cards and readers.

Pre-configured model & upgrade path



Specifications & Configurations

COPY				
ITEM	SPECIFICATIONS			
Copier Type	Console Type			
Scan Resolution	600 x 600dpi (23.6 x 23.6 dots/mm)			
Output Resolution	600 x 600dpi (23.6 x 23.6 dots/mm)			
Gradation	256 levels of gray			
Warm-up Time	15 seconds or less (DC configuration) 21 seconds or less (CP configuration) *1 24 seconds or less (CF, CFP configuration) *1 (Environment) Temperature: 20 deg C, Humidity: 55%, Voltage: 110V/220V, Standard CP/CF/CFP configuration, without HDD *1 Conditions: Achieved only when IP address is set up at the device and identified on the network.			
Original Size	Maximum: 297x432mm (A3, 11x17") for both sheets and bound documents			
Copy Paper Size	[Tray 1-4] Maximum: [Standard size] A3 (297x420mm), 11 x 17" (279x432mm), [Non-standard size] 297 x 432mm Minimum: [Standard size] A5 (148x210mm), [Non- standard size] 139.7 x 182mm [Tandem Tray] Maximum: A4LEF Minimum: 8.5 x 11"LEF [Bypass Tray] Maximum: [Standard] A3 (297x420mm), 11 x 17" (279x432mm), [Non-standard size] 297 x 432mm Minimum: Postcard (100x148mm), Envelope (120x235mm), [Non-standard size] 89.0 x 98.4mm Image Loss: Lead Edge within 4mm, Trail Edge within 4mm, Right & Left Edges within 4mm			
Paper Weight*2	Tray 1: 60 to 105gsm, Tray 2-4: 60 to 216gsm, Bypass Tray: 60 to 216gsm, Tandem Tray: 60 to 216gsm			
FCOT *3	4.3 seconds or less (A4LEF from Tray1) Conditions: platen copy, power ON, Fuser ready, ROS ready, A4LEF from Tray1, 80gsm premier or business paper			
Copy Magnification	<100%> 1:1 0.7% <Preset> 1:0.500, 1:0.707, 1:0.816, 1:0.866, 1:1.154, 1:1.225, 1:1.414 <Variable> 1:0.25 to 1:4.00 (1% increments)			

PRINTER	
ITEM	SPECIFICATIONS
Printer Type	Built-in Type
CPU	Power PC-300MHz
Continuous Print Speed	Same as the machine copy speed
Resolution	Standard Mode: 600 x 600dpi (23.6 x 23.6 dots/mm) High Resolution Mode: 1,200 x 1,200dpi (47.2 x 47.2 dots/mm)
Page Description Language	
Standard	PCL6, PCL5e
Optional	Adobe® PostScript® 3TM*1
Emulation (Standard)	ESC/P (For English machine only) ESCP/K (For Simplified Chinese and Traditional Chinese machines only) KS/KSSM (For Korean machine only) HP-GL (HP7586B), HP-GL2/RTL (HP Design Jet 750C Plus)
Supported Protocols	
Parallel	Compatible, Nibble, ECP
Ethernet	TCP/IP(lpd,IPP,SMB,Port9100), NetWare® (IPX/SPX), EtherTalk® **1
Supported Operating Systems*2	
Standard	Windows® 95/98/Me, Windows NT® 4.0, Windows® 2000/ XP, Windows ServerTM 2003
PostScript® 3™ (Optional)	Windows® 95/98/Me, Windows NT® 4.0, Windows® 2000/ XP, Windows ServerTM 2003, Mac OS*3
Built-in Fonts	
Standard	Roman 81 type faces, symbol 35 sets
PostScript® 3™ (Optional)	Roman 136 type faces
Memory Capacity	256MB (Maximum: 512MB)
Interface (Standard)	Bi-directional parallel (IEEE 1284 compatible), Ethernet 100Base-TX/10Base-T, USB 2.0*4

*1: When the PostScript® 3™ Kit is installed.
*2: Please refer to the Fuji Xerox official web site for the latest information on supported OS.
*3: Supported Mac OS: Mac OS X 8.6 to X 9.2.2, OS X 10.2.x/10.3.9 to 10.4.6
*4: Supported OS: **Windows®** 98SE/Me/2000/XP, Windows Server™ 2003, Mac OS 8.6 to 9.2.2, and Mac OS X 10.2.x/10.3.9 to 10.4.6

SCANNER				
ITEM	SPECIFICATIONS			
Scanner Type	Monochrome Scanner			
Scan Size	Maximum: 297x432mm (A3, 11_17") for both sheets and bound documents			
Scan Resolution	600x600dpi, 400x400dpi, 300x300dpi, 200x200dpi (23.6x23.6 dots/mm, 15.7x15.7 dots/mm, 11.8x11.8 dots/ mm, 7.9x7.9 dots/mm)			
Scan Gradation	8-bit Input, 1-bit Output			
Scanning Speed*1	50 ipm (A4 LEF, ITU-T No.1 Chart, 200/300dpi, Scan to Mailbox)			
Interface	Ethernet 100Base-TX/10Base-T			
Scan to Mailbox				
Protocol	TCP/IP (Salutation, HTTP)			
Output Format	Monochrome binary: TIFF, XDW (DocuWorks document)*2, PDF*2			
Driver-Compatible OS*3	TWAIN (Salutation) Windows® 95/98/Me, Windows NT® 4.0, Windows® 2000/ XP, Windows ServerTM 2003			
Save to PC				
Protocol	TCP/IP (SMB, FTP)			
Output Format	Monochrome binary: TIFF (Compression method: MH, MMR), XDW (DocuWorks document), PDF			
Compliant OS*3	Windows® 95/98/Me*4, Windows NT® 4.0, Windows® 2000/XP, Windows ServerTM 2003 Mac OS*5 *6, NetWare(r) 5.x*5			
Send E-mail				
Protocol	TCP/IP (SMTP)			
Output Format	Monochrome binary: TIFF (Compression method: MH, MMR), XDW (DocuWorks document), PDF			

*1: Scanning speed varies depending on originals and resolution.
*2: Supported only when documents are retrieved using CentreWare Internet Services.
*3: Please refer to the Fuji Xerox official web site for the latest information on supported OS.
*4: Only SMB protocol can be supported.
*5: Only FTP protocol can be supported.
*6: Supported **Mac OS X 10.1.5/10.2.x/10.3.8/10.3.9/10.4.2/10.4.6**

Specifications & Configurations

DIRECT FAX (OPTIONAL)

ITEMS	SPECIFICATIONS
Sending Document Size	A3, B4, A4
Transmission Speed	Same as the fax feature
Transmission Resolution	
Standard	200 x 100 dpi (7.9x3.9 dots/mm)
Fine	200 x 200 dpi (7.9x7.9 dots/mm)
Super Fine	400 x 400dpi (15.7x15.7 dots/mm), 600 x 600dpi (23.6x23.6 dots/mm)
Applicable Lines	Same as the fax feature
Supported OS* ¹	Windows® 95/98/Me, Windows NT® 4.0, Windows® 2000/XP, Windows® ServerTM 2003

*1: Please refer to the Fuji Xerox official web site for the latest information on supported OS.

INTERNET FAX (OPTIONAL)

ITEMS	SPECIFICATIONS
Sending Document Size	A3, B4, A4
Scanning Density	Same as the fax feature
Output Format	Format: TIFF-FX Compression method: MH, MMR, JBIG
Profile	TIFF-S, TIFF-F, TIFF-J
Supported Protocols	Transmission: SMTP, Reception: SMTP, POP3

DUPLEX AUTOMATIC DOCUMENT FEEDER

ITEMS	SPECIFICATIONS
Document Feeder Type	Duplex Automatic Document Feeder
Document Size / Paper Weight	Maximum: 297 x 432mm (A3, 11x17"), 297 x 600mm* ¹ Minimum: 139.7 x 210mm 38-128gsm (Duplex: 50-128gsm)
Capacity* ²	75 sheets
Dimensions / Weight	560 (W) x 510 (D) x 120 (H) mm / 10kg

*1: When using the fax feature. Only one set in simplex is available for a long document of more than 432mm. When the length of the original paper exceeds 432mm, it is recommended to manually lift the paper end from the bottom to enable straight feeding. In this case the paper weight shall be between 60 to 90gsm, but the performance is not guaranteed.

*2: When using 80gsm or less paper.

FAX (OPTIONAL)

ITEMS	SPECIFICATIONS
Sending Document Size	Maximum: A3 (297 x 420mm), 11x17" (279 x 432mm), Long size document (Maximum 600mm)
Recording Paper Size	Maximum: A3, 11x17", Minimum: A5
Electrical Transmission Time* ¹	Less than 3 seconds* ²
Communication Mode	ITU-T G3
Scanning Density	
Standard	8x3.85 lines/mm, 200 x 100 dpi (7.9x3.9 dots/mm)
Fine	8x7.7 lines/mm, 200 x 200 dpi (7.9x7.9 dots/mm)
Super Fine	16x15.4 lines/mm
Super Fine (400dpi)	400 x 400dpi (15.7x15.7 dots/mm)
Super Fine (600dpi)	600 x 600dpi (23.6x23.6 dots/mm)
Encoding Method	MH, MR, MMR, JBIG
Transmission Speed	G3:33.6/31.2/28.8/26.4/24.0/21.6/19.2/16.8/14.4/12.0/9.6/ 7.2/4.8/2.4 kbps
Applicable Lines	PBX, PSTN, Maximum 3 lines* ³

*1: This transmission speed is only for that of image information and does not include the controlling time for the communication. Note that the actual transmission time depends on the contents of documents, machine that the recipient uses, and the status of the communication line.

*2: When transmitting an A4 size 700-character document in the standard quality (8x3.85 lines/mm) and high speed mode (28.8 kbps or faster: JBIG).

*3: The optional Fax Kit (1 line), Additional G3 Port Kit (2 lines) and Fax Extension Board Kit are necessary.

B-FINISHER(OPTIONAL)

ITEMS	SPECIFICATIONS
Stacker Type	Finisher Tray x 1: Collate (offset stacking available) / Stack (offset stacking available)
Paper Size / Paper Weight	Maximum: A3, 11x17", Minimum: B5LEF / 64-105gsm
Capacity of Stacker* ¹	A4/Letter: 1,000 sheets, B4/A3/11x17": 500 sheets, Mixed stack* ² : 300 sheets
Staple	
Capacity of Stapling	50 sheets* ³
Paper Size for Stapling	Maximum: A3, 11x17", Minimum: B5LEF
Positions to Staple	Front corner (Single), Rear straight (Single), Dual
Dimensions / Weight	566 (W) x 584 (D) x 940 (H) mm / 30kg
Space Requirements* ⁴	2,140 (W) x 1,185 (D) mm (main unit + B-Finisher)

*1: When using Xerox P paper (64gsm).

*2: Large size paper is stacked on top of smaller size paper.

*3: When using 64gsm to 90gsm paper in the range of two to fifty sheets. However, note that capacity of stapling may become fewer than 50 sheets depending on paper quality.

*4: When the bypass tray is extended to the maximum.



Basic Configuration with Tandem Tray



Basic Configuration with 2-Tray and B-Finisher



B-Finisher



Two tray



Tandem Tray

